



# THE MATHEMATICAL MODEL OF THERMOELASTIC STRESSES IN THE CARPATHIAN REGION

N. Bakhova\*,<sup>1</sup>

<sup>1</sup>National Academy of Sciences of the Ukraine Institute of geophysics by name S. I. Subbotin, Kiev, Ukraine

Received 1 July 2021; accepted 10 August 2022; published 11 September 2022.

The two-dimensional thermoelastic model of the Carpathian region is constructed using the finite element method. The physical-mathematical model is as close as possible to the real environment. A high-precision detailed distribution of temperatures, heat flow, thermoelastic stresses and displacements is obtained. It is shown that inhomogeneous heating of rocks and structural heterogeneities lead to significant changes in stress and displacement fields in the Carpathian region.

**Keywords:** temperature, heat flow, thermoelastic stresses, displacements, inhomogeneous medium.

**Citation:** Bakhova, N. (2022), The mathematical model of thermoelastic stresses in the Carpathian region, *Russian Journal of Earth Sciences*, Vol. 22, ES01SI01, doi: 10.2205/2022ES01SI01.

## 1 INTRODUCTION

Numerous theoretical and experimental geophysical studies show that the temperature changes observed in the Earth's crust create thermoelastic stresses, the values of which reach the strength limit of rocks. This gives us reason to consider thermal stresses as one of the sources of tectonic and seismic activity.

The analysis of the heat field features of the Carpathians and adjacent troughs shows that the heat flow distribution correlates with the features of the Carpathian region tectonics [Kutas, 2014].

Major structural elements of the Carpathians are the Transcarpathian trough, the Folded Carpathians and the Pre-Carpathian trough. Each of these structural elements is distinguished by the history of its development, the age and structure of the foundation, the sedimentation conditions, the Earth's crust thickness [Glushko, 1968; Chekunov, 1987].

The Carpathians folded-cover structure indicates significant horizontal movements of the lithosphere plates.

The heat flows value in the Folded Carpathians reaches 50–75 mWm<sup>-2</sup>, in the Flysch Carpathians it does not exceed 65 mWm<sup>-2</sup>. The distortions of heat flows associated with the cover structure of the Carpathian system is 10–15% [Kutas, 2014].

The Outer Folded Carpathians and the Transcarpathian trough are separated by the Transcarpathian deep fault. In the Transcarpathian trough heat flows increase up to 80–90 mWm<sup>-2</sup>, and within the anomalous zones to 100–115 mWm<sup>-2</sup> [Kutas, 2014].

The mountain-folded structure of the Carpathians is separated from the Pre-Carpathian trough by the deep Pre-Carpathian fault. A high heat flows anomaly is observed in the northwestern part of the Pre-Carpathian trough and along its southwestern side (50–70 mWm<sup>-2</sup>). In the lowest zone, where the sediment capacity reaches 8–10 km, minimal heat flows are observed [Kutas, 2014].

Seismic studies of the Carpathian region clearly indicate that the seismically active areas correspond to increased values of heat flow. In Transcarpathia, the magnitude of seismic events is within  $M_{max} = 4.7 \div 5.3$ , and the heat flow density  $q = 80 \div 100$  mWm<sup>-2</sup>. In the Carpathians  $M_{max} = 4.2 \div 4.7$ ,  $q = 60 \div 70$  mWm<sup>-2</sup>. In the northeast of the Pre-Carpathian trough  $M_{max} = 4.7$ ,  $q = 50$  mWm<sup>-2</sup>; in the southeast –  $M_{max} = 4.1$ ,  $q = 40$  mWm<sup>-2</sup> [Kutas et al., 2006].

The tectonic fragmentation of the Earth's crust, the presence of contrasting inclusions and structural heterogeneities cause significant variations in the heat flow both laterally and in depth. Thermal anomalies associated with contact zones are quite intense and occupy vast territories [Bakhova, 2009].

Inhomogeneous heating of a heterogeneous environment leads to the occurrence of thermoelastic stresses and displacements. The evaluation of the purely thermoelastic contribution to the lithosphere stress state shows that thermal stresses can have a significant influence on the formation of seismically active zones [Bakhova, 2010].

Further study of thermoelastic effects is of great interest, since all earthquake mechanisms are directly or indirectly related to the Earth's thermal field. In this paper, the method for calculating

\*Corresponding author: bakhova.nataly@gmail.com



(2) is true, it is necessary to find the elastic lithosphere thickness.

In the geophysical literature, the temperature of the elastic layer base is called the elastic “blocking temperature”  $T_e$  [Bratt et al., 1985; McNutt and Menard, 1982].

The lithosphere rocks, heated to the certain temperature  $T > T_e$ , cannot make a significant contribution to the field of thermal stresses, since the stresses will be released plastically.

However, there are other estimates  $T_e$ .

In the works [McNutt and Menard, 1982; Bodine et al., 1981] there is an obvious correlation between the elastic thickness of the oceanic lithosphere and the depth 450°C–isotherm calculated from the cooling model of the spreading oceanic plate. It is impossible to apply thermal and thermomechanical models of the oceanic lithosphere to the continental one [Willett et al., 1985].

The correlation observed in the oceanic lithosphere between the heat flow and the age of structures, also between the thickness of the elastic-viscous layer and the characteristic temperatures on the continents, is more complex. Authors [Willett et al., 1985] concluded that the elastic power corresponds to depths with different isotherms: from 300°C before 700°C.

Limit value  $T_e$  for the oceanic lithosphere is 700–800°C [Bratt et al., 1985].

The temperature in the earthquake source area is an important factor in determining whether the

deformation occurs seismically or not. The maximum temperatures at which earthquakes occur in the Earth’s crust are within  $350 \pm 100^\circ\text{C}$ , and in the mantle –  $700 \pm 100^\circ\text{C}$  [Chen and Molnar, 1983]. Most near-horizon earthquakes have focal depths between the Moho and the depth 800°C isotherm [Bratt et al., 1985].

In the Transcarpathian trough the magnitude of the strongest earthquakes corresponds to 4.7–5.3, the depth of their focus does not exceed 10 km [Kutas et al., 2006]. The temperature at these horizons reaches 500°C (Figure 2, a).

The second approximation of the Carpathian region thermoelastic model is as follows. The environment is considered to be a conductor of thermoelastic stresses to the depth of 500°C isotherm. It is from these considerations that the model lower bound is chosen.

In the areas of transition from the Transcarpathian trough to the Carpathians at depths from 15 km to 30 km the temperature reaches 800°C. This zone is included in the model, but the thermoelastic stresses accumulated can be released plastically.

For two-dimensional problems of solid mechanics, based on the minimum potential energy principle, the following functional can be obtained

$$\Pi = \int_V \frac{1}{2} \varepsilon^T \sigma dV. \tag{3}$$

For a finite element partitioning, expression (3) can be written as

$$\Pi^e = \sum_{e=1}^l t_e \int_{\Omega_e} \frac{1}{2} \varepsilon^T \sigma d\Omega_e,$$

where  $l$  – total number of elements in the system;  
 $t$  – element subdomain thickness;  
 $\Omega_e$  – element subdomain.

Differentiating an element contribution  $\Pi^e$  by displacement the grid nodes  $\delta$  and by summing over all the elements, we get a system of algebraic equations

$$K \delta = F_0, \tag{4}$$

where  $K$  – stiffness matrix;

$F_0$  – forces in the nodes that occur during the initial deformation.

Equation (4) allows us to obtain a solution for displacements. From the relations (1) and (2), we can obtain the following expression for the stresses

$$\sigma = DB\delta - D\varepsilon_0. \tag{5}$$

It is supposed that the stresses inside the elements are constant and are applied to the element gravity center. The matrix  $B$  is defined if the shape functions and nodal displacements are known.

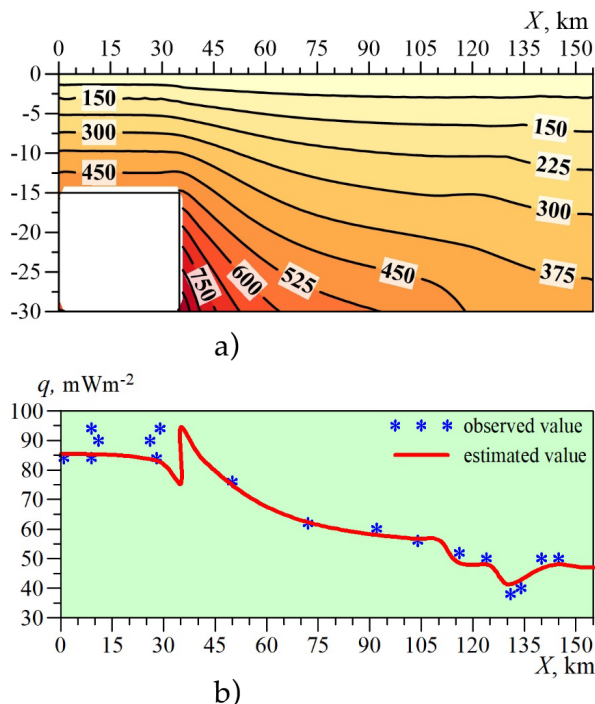
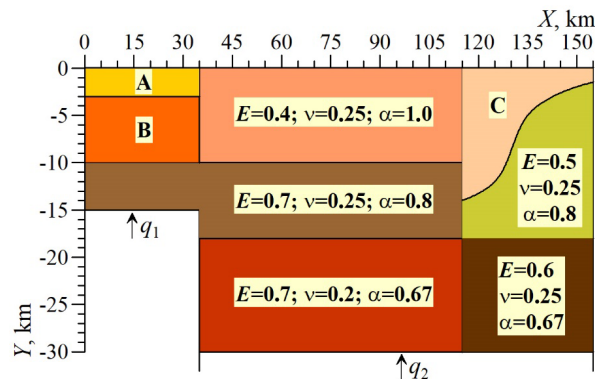


Figure 2: Thermal model of the Carpathian region: a) – temperature distribution; b) – surface heat flow distribution.

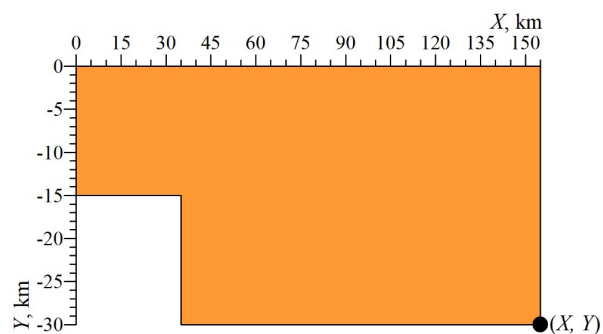


**Figure 3:** Thermoelastic model of the Carpathian region: A –  $E = 0.2$ ,  $\nu = 0.2$ ,  $\alpha = 1.0$ ; B –  $E = 0.4$ ,  $\nu = 0.25$ ,  $\alpha = 1.0$ ; C –  $E = 0.3$ ,  $\nu = 0.2$ ,  $\alpha = 1.0$ .

Environment elastic properties (Young’s modulus  $E \times 10^{11}$  Pa, Poisson’s ratio  $\nu$ , coefficient of linear expansion  $\alpha \times 10^{-5}/^\circ\text{C}$ ), shown in Figure 3, set based on generalized data [Turcotte and Schubert, 1982].

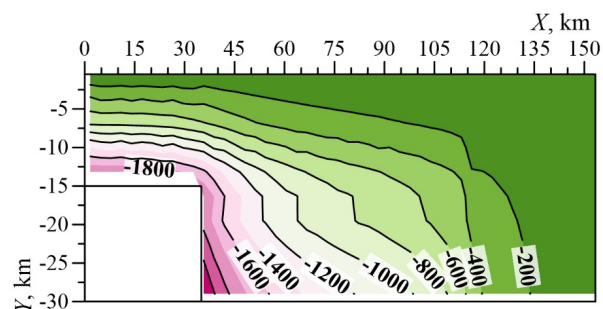
Without introducing the minimum number of known displacements solution to system (4) is impossible, because the displacements cannot be unique way determined through forces. Mathematically this obvious fact means that the matrix [K] becomes singular, that is invertible.

The choice of known displacements or model “fixing” depends on the specific geodynamic situation.



**Figure 4:** Setting zero displacements: the model is fixed at one point in the axis directions X and Y.

Setting the known zero displacements in the



**Figure 5:** Distribution of thermoelastic stresses  $\sigma_{yy}$ .

Carpathian region is somewhat difficult. In such situations, a computational experiment comes to the rescue. The calculations were carried out for the “fixing” model shown in Figure 4.

The calculation results of thermoelastic stresses  $\sigma_{yy}$  are presented in Figure 5. The stresses  $\sigma_{xx}$  have a similar distribution pattern. The  $\sigma_{yy}$  and  $\sigma_{xx}$  are stresses of the tensile type and are the same, since the model “fixing” does not affect the values of thermoelastic stresses. This follows from the formula (5).

The maximum values  $\sigma_{yy}$  (1.5–2 kbar) are located in the region of the Transcarpathian trough and the Folded Carpathians. The Eastern European platform is characterized by low stresses values (5–240 bar).

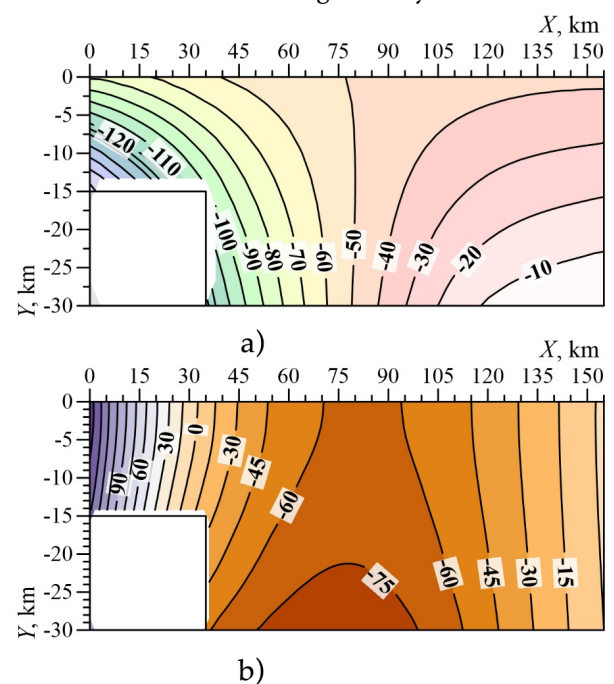
The displacement of environment nodal points for the model are shown in Figure 6. The “minus” sign in the axis X direction means that the environment is moving in the direction opposite to the axis X (Figure 6, a).

In turn, the “minus” sign in the axis Y direction means that the environment’s movement occurs in the axis Y direction. The values of the movements are given in meters.

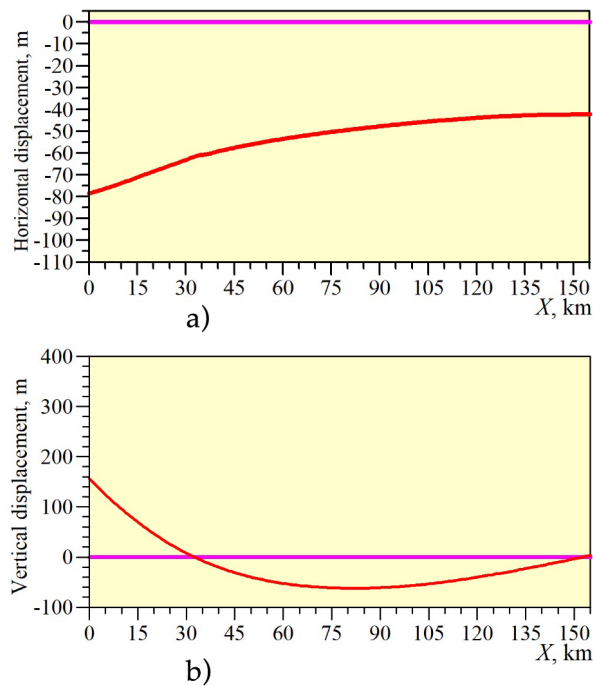
The Earth’s crust of the studied region is experiencing stretching, the maximum value of which is observed in the Transcarpathian trough.

The environment lowering occurs in the transition area from the Transcarpathian trough and directly under the Carpathians (Figure 6, b).

Towards the East European Platform, the Earth’s crust vertical movements gradually decrease.



**Figure 6:** Distribution of displacements: a) – displacements in the axis X direction; b) – displacements in the axis Y direction.



**Figure 7:** The Earth's crust surface displacement for model: a) – horizontal displacement; b)– vertical displacement.

Figure 7 shows the horizontal and vertical movements of the Earth's surface.

## REFERENCES

- Bakhova, N. I., Computing experiment in modern geophysics, *Proceedings of National Aviation University*, 40(3), 262–270, doi:10.18372/2306-1472.40.1781, 2009.
- Bakhova, N. I., Thermoelastic stresses in non-uniform geological environments difficult outline, *Proceedings of National Aviation University*, 42(1), 70–77, doi:10.18372/2306-1472.45.1888, 2010.
- Bodine, J. H., M. S. Steckler, and A. B. Watts, Observations of flexure and the rheology of the oceanic lithosphere, *Journal of Geophysical Research: Solid Earth*, 86(B5), 3695–3707, doi:10.1029/JB086iB05p03695, 1981.
- Bratt, S. R., E. A. Bergman, and S. C. Solomon, Thermoelastic stress: How important as a cause of earthquakes in young oceanic lithosphere?, *Journal of Geophysical Research: Solid Earth*, 90(B12), 10249–10260, doi:10.1029/JB090iB12p10249, 1985.
- Chekunov, A. V. (Ed.), *The Lithosphere of Central and Eastern Europe Geo-traverses I, II and V*, 168 pp., Naukova Dumka, Kiev, (in Russian), 1987.
- Chen, W.-P., and P. Molnar, Focal depths of intracontinental and intraplate earthquakes and their implications for the thermal and mechanical properties of the lithosphere, *Journal of Geophysical Research: Solid Earth*, 88(B5), 4183–4214, doi:10.1029/JB088iB05p04183, 1983.
- Glushko, V. V., Tectonics and oil-and gas bearing of the carpathians and adjoining troughs, *Moscow: Nedra*, p. 264, (in Russian), 1968.
- Kutas, R. I., Thermal flow and geothermic models of the earth's crust of the ukrainian carpathians, *Geophysical journal*, 36(6), 3–27, doi:10.24028/gzh.0203-3100.v36i6.2014.111016, 2014.
- Kutas, V. V., A. V. Kendzera, V. D. Omelchenko, G. M. Drogitskaya, and I. A. Kalitova, Manifestations of seismic activity in xviii–xx centuries and potentially seismically dangerous zones of western part of ukraine, *Geophysical journal*, 28(4), 3–15, 2006.
- Landau, L. D., and E. M. Lifshitz, *Theory of Elasticity*, 246 pp., Nauka, Moscow, (in Russian), 1987.
- McNutt, M. K., and H. W. Menard, Constraints on yield strength in the oceanic lithosphere derived from observations of flexure, *Geophysical Journal International*, 71(2), 363–394, doi:10.1111/j.1365-246X.1982.tb05994.x, 1982.
- Turcotte, D. L., and G. Schubert, *Geodynamics: Applications of Continuum Physics to Geological Problems*, 450 pp., John Wiley and Son, New York, 1982.
- Willet, S. D., D. S. Chapman, and H. J. Neugebauer, A thermo-mechanical model of continental lithosphere, *Nature*, 314(6011), 520–523, doi:10.1038/314520a0, 1985.
- Zienkiewicz, O., and I. Cheung, *The Finite Element Method in Engineering Science*, McGraw-Hill, London, New York, 1971.